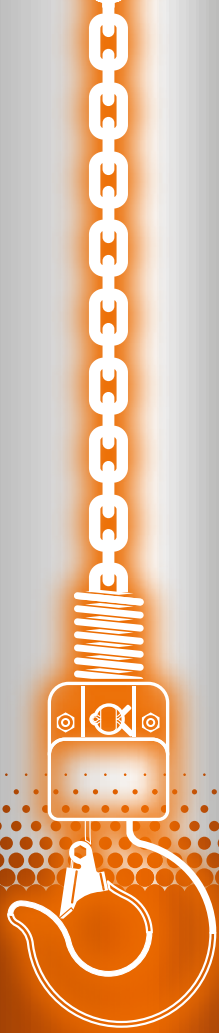


HITACHI
Inspire the Next



Electric Chain Hoist

L series

Our L series chain hoist offers high levels of machine durability and safety to ensure the performance of your hoisting operations.

FEATURES

HIGHER DURABILITY

- The load rating is 40% ED* which is a significant improvement over other previous models.
*L model

EASY SLINGING WORK

- The new hook allows for easy slinging work with the wide hook dimension.

HIGHER SAFETY

- The new chain container next to the main body of the hoist prevents unnecessary movement of the chain container and Lower hook doesn't touch the chain container.
- The new Hook Latch has a claw. The claw grips on to the hook securely.



SPECIFICATIONS

SINGLE SPEED L(H)

Model Name	1/2L(H)	1/4L(H)	1/6L(H)*
Rated Load (kg)	500	250	150
Rating (%ED)	40		
Max.Starting Frequency (Starts/h)	240		
Hoisting Speed (m/min)	50Hz	7.2	10
	60Hz	8.5	12
Hook Dimensions (mm)	27		

*without overload limiter device

DUAL SPEED LN(H)

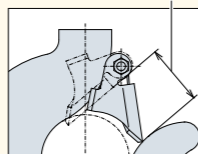
Model Name	1/2LN(H)	1/4LN(H)	1/6LN(H)*
Rated Load (kg)	500	250	150
Rating (%ED)	30		
Max.Starting Frequency (Starts/h)	180		
Hoisting Speed (m/min)	50Hz	7.2/1.8	10/2.5
	60Hz	8.5/2.1	12/3.0
Hook Dimensions (mm)	27		

*without overload limiter device

SINGLE PHASE LS(H)

Model Name	1/2LS(H)	1/4LS(H)
Rated Load (kg)	500	250
Rating (%ED)	25	
Max.Starting Frequency (Starts/h)	150	
Hoisting Speed (m/min)	50Hz	3.6
	60Hz	4.3
Hook Dimensions (mm)	27	

Hook Dimensions



1/2L(H):1/2L(3m lift) or 1/2LH(6m lift or more)

SINGLE SPEED S(H)

Model Name	1/2S(H) ₂	1/4S(H) ₂
Rated Load (kg)	500	250
Rating (%ED)	25	
Max.Starting Frequency (Starts/h)	150	
Hoisting Speed (m/min)	50Hz	7.2
	60Hz	8.5
Hook Dimensions (mm)	19	

DUAL SPEED SN(H)

Model Name	1/2SN(H) ₂	1/4SN(H) ₂
Rated Load (kg)	500	250
Rating (%ED)	25	
Max.Starting Frequency (Starts/h)	150	
Hoisting Speed (m/min)	50Hz	7.2/1.8
	60Hz	8.5/2.1
Hook Dimensions (mm)	19	

SINGLE PHASE SS(H)

Model Name	1/2SS(H) ₂	1/4SS(H) ₂
Rated Load (kg)	500	250
Rating (%ED)	25	
Max.Starting Frequency (Starts/h)	150	
Hoisting Speed (m/min)	50Hz	3.6
	60Hz	4.3
Hook Dimensions (mm)	19	

2-point Pushbutton Switch type

SINGLE SPEED		Model Name	1/2L	1/2LH
Rated Load (kg)	Lift (m)	Hoisting Speed (m/min)	50Hz	500
			60Hz	3 6
Motor Output (kW)	50Hz	7.2	500	
	60Hz	8.5	500	
Electric Source	50Hz	0.63	500	
	60Hz	0.75	500	
Control Voltage (V)	3 Phase 220/380-415V, 50Hz 220-230/440-460V, 60Hz			
Rating	40%ED, 240 Starts/h			
Ambient Temperature(°C)	-10 ~ 40			
Link Chain	Falls	1		
	Dia.	6.3		
	Pitch	19.1		
Approx. Weight (kg)	32	35		

DUAL SPEED		Model Name	1/2LN	1/2LNH
Rated Load (kg)	Lift (m)	Hoisting Speed (m/min)	50Hz	500
			60Hz	3 6
Motor Output (kW)	50Hz	7.2/1.8	500	
	60Hz	8.5/2.1	500	
Electric Source	50Hz	0.63/0.16	500	
	60Hz	0.75/0.19	500	
Control Voltage (V)	3 Phase 220/380-415V, 50Hz 220-230, 440-460V, 60Hz			
Rating	High Speed	20%ED, 120 Starts/h	500	
	Low Speed	10%ED, 60 Starts/h	500	
Ambient Temperature(°C)	-10 ~ 40			
Link Chain	Falls	1		
	Dia.	6.3		
	Pitch	19.1		
Approx. Weight (kg)	35	38		

SINGLE PHASE		Model Name	1/2LS	1/2LSH
Rated Load (kg)	Lift (m)	Hoisting Speed (m/min)	50Hz	500
			60Hz	3 6
Motor Output (kW)	50Hz	3.6	500	
	60Hz	4.3	500	
Electric Source	50Hz	0.30	500	
	60Hz	0.35	500	
Control Voltage (V)	1 Phase 220-240V, 50Hz 110V, 220V, 60Hz			
Rating	25%ED, 150 Starts/h			
Ambient Temperature(°C)	-10 ~ 40			
Link Chain	Falls	1		
	Dia.	6.3		
	Pitch	19.1		
Approx. Weight (kg)	34	37		

3-point Pushbutton Switch type

SINGLE SPEED		Model Name	1/2L	1/2LH
Rated Load (kg)	Lift (m)	Hoisting Speed (m/min)	50Hz	500
			60Hz	3 6
Motor Output (kW)	50Hz	7.2	500	
	60Hz	8.5	500	
Electric Source	50Hz	0.63	500	
	60Hz	0.75	500	
Control Voltage (V)	3 Phase 220/380-415V, 50Hz 220-230/440-460V, 60Hz			
Rating	40%ED, 240 Starts/h			
Ambient Temperature(°C)	-10 ~ 40			
Link Chain	Falls	1		
	Dia.	6.3		
	Pitch	19.1		
Approx. Weight (kg)	32	35		

DUAL SPEED		Model Name	1/2LN	1/2LNH
Rated Load (kg)	Lift (m)	Hoisting Speed (m/min)	50Hz	500
			60Hz	3 6
Motor Output (kW)	50Hz	7.2/1.8	500	
	60Hz	8.5/2.1	500	
Electric Source	50Hz	0.63/0.16	500	
	60Hz	0.75/0.19	500	
Control Voltage (V)	3 Phase 220/380-415V, 50Hz 220-230, 440-460V, 60Hz			
Rating	High Speed	20%ED, 120 Starts/h	500	
	Low Speed	10%ED, 60 Starts/h	500	
Ambient Temperature(°C)	-10 ~ 40			
Link Chain	Falls	1		
	Dia.	6.3		
	Pitch	19.1		
Approx. Weight (kg)	35	38		

SINGLE PHASE		Model Name	1/2LS	1/2LSH
Rated Load (kg)	Lift (m)	Hoisting Speed (m/min)	50Hz	500
			60Hz	3 6
Motor Output (kW)	50Hz	3.6	500	
	60Hz	4.3	500	
Electric Source	50Hz	0.30	500	
	60Hz	0.35	500	
Control Voltage (V)	1 Phase 220-240V, 50Hz 110V, 220V, 60Hz			
Rating	25%ED, 150 Starts/h			
Ambient Temperature(°C)	-10 ~ 40			
Link Chain	Falls	1		
	Dia.	6.3		
	Pitch	19.1		
Approx. Weight (kg)	34	37		

Network

Hitachi Industrial Equipment Systems Co., Ltd. meets customers' needs through the total network which can supply speedy design, production, sales, service and engineering for industrial equipment and systems.

Global Sales Network



Asia & Oceania

China

Hitachi Industrial Equipment Systems (China) Co., Ltd.
(Shanghai Office)
Room2201, Rui Jin Building, No.205
Maoming Road(S) Shanghai 200020
TEL : +86 (21) 5489-2378
FAX : +86 (21) 3356-5070

(Beijing Office)

Room1420, Beijing Fortune Building,
No.5 Dong San Huan Bei Road,
Chao Yang District, Beijing 100004
TEL : +86 (10) 6590-8180
FAX : +86 (10) 6590-8189

(Guangzhou Office)

Room3003, HNA Tower,
8# Linhezhong Road, Tianhe District,
Guangzhou 510610
TEL : +86 (20) 3877-3819
FAX : +86 (20) 2735-3820

Hitachi Industrial Equipment Systems (Hong Kong) Co., Ltd.

8/F, Building 20E, Phase 3, Hong Kong
Science Park, Pak Shek Kok,
New Territories, Hong Kong
TEL : +852 2735-9218
FAX : +852 2735-6793

Taiwan Hitachi Asia Pacific Co., Ltd
3rd Floor, No. 167, Tun Hwa N. Road,
Hung-Kuo Building, Taipei 105, Taiwan
TEL : +886 (2) 2718-3666
FAX : +886 (2) 2514-7664

India

Hitachi India Private Limited
Ground & First Floor, Tower B, World
Mark 1,
Asset Number 11, Aerocity, NH-8, New
Delhi-110037
TEL : +91 (11) 4060-5252
FAX : +91 (11) 4060-5253

Indonesia

PT Hitachi Asia Indonesia
Menara BCA 38th Floor Suite #3804 &
3805 Jl. M. H Thamrin No.1, Jakarta
10310, Indonesia
TEL : +62 (21) 2358-6757
FAX : +62 (21) 2358-6755

Malaysia

Hitachi Industrial Equipment (Malaysia)
Sdn. Bhd.
Lot 6498, Batu 5 3/4 , Lorong Haji Abdul
Manan, 42100 Klang, Selangor,
Malaysia
TEL : +60 3 3290 2323
FAX : +60 3 3290 7570

Philippines

Hitachi Asia Ltd. (Philippines Branch)
Unit 8, 11th Floor Zuellig Bldg., Makati
Avenue corner Paseo de Roxas,
Makati City, Philippines 1225
TEL : +63 (2) 886-9018
FAX : +63 (2) 887-3794

Singapore

Hitachi Asia Ltd.
(Industrial Components & Equipment
Group)
No.30, Pioneer Crescent
#10-15, West Park Bizcentral
Singapore 628560
TEL : +65-6305-7400
FAX : +65-6305-7401

Thailand

Hitachi Asia (Thailand) Co., Ltd.
12th Floor, Ramaland Bldg., No.952
Rama IV Road, Suriyawong Bangrak,
Bangkok 10500, Thailand
TEL : +66 2 632 9292
FAX : +66 2 632 9299

Viet Nam

Hitachi Asia (Viet Nam) Co., Ltd.
(Ho Chi Minh City Office)
R. 8-9-10A, 4th FL., The Landmark
Bldg, 5B Ton Duc Thang, Dist. 1, Ho
Chi Minh City, Vietnam
TEL : +84 28 3829 9725
FAX : +84 28 3829 9729

(Ha Noi Office)

23th Floor, Lotte Center Hanoi, 54 Lieu
Giai St., Cong Vi Ward, Ba Dinh Dist.,
Hanoi, Vietnam
TEL : +84 24 3933 3123
FAX : +84 24 3933 3125

Australia

Hitachi Australia Pty Ltd.
Suite 801, Level 8, 123 Epping Road
North Ryde NSW 2113, Australia
TEL : +61 2 9888 4100
FAX : +61 2 9888 4931

Europe

Germany

Hitachi Europe GmbH
Niederkaßeler Lohweg 191, 40547
Düsseldorf, Germany
Tel: +49 (211) 5283 0
FAX: +49 (211) 5283 649

Latin America

Mexico

Hitachi Industrial Equipment Mexico,
S.A. de C.V.
Paseo de la Atliplanicie No.11, "Torre
Wolken" Piso 2
Col. Villas de Irapuato C.P. 36670
Irapuato, Gto, Mexico
Tel : +52 (462) 635-7251

Information in this brochure is subject to change without notice.

Hitachi Industrial Equipment Systems Co., Ltd.

For further information, please contact your nearest sales representative.



Registration number: JACO-EC99J2009
Registration date: July 22, 1996

Hitachi Industrial Equipment Systems Co., Ltd. (Taga Administrative division) obtained ISO 14001 certification, an international standard for environmental management systems.



Registration number: JQA-QMA 12087
Registration date: April 1, 2005

Hitachi Industrial Equipment Systems Co., Ltd. (Taga Administrative division) obtained international standard ISO 9001 certification for the quality assurance of the hoist motor block contained in this brochure.